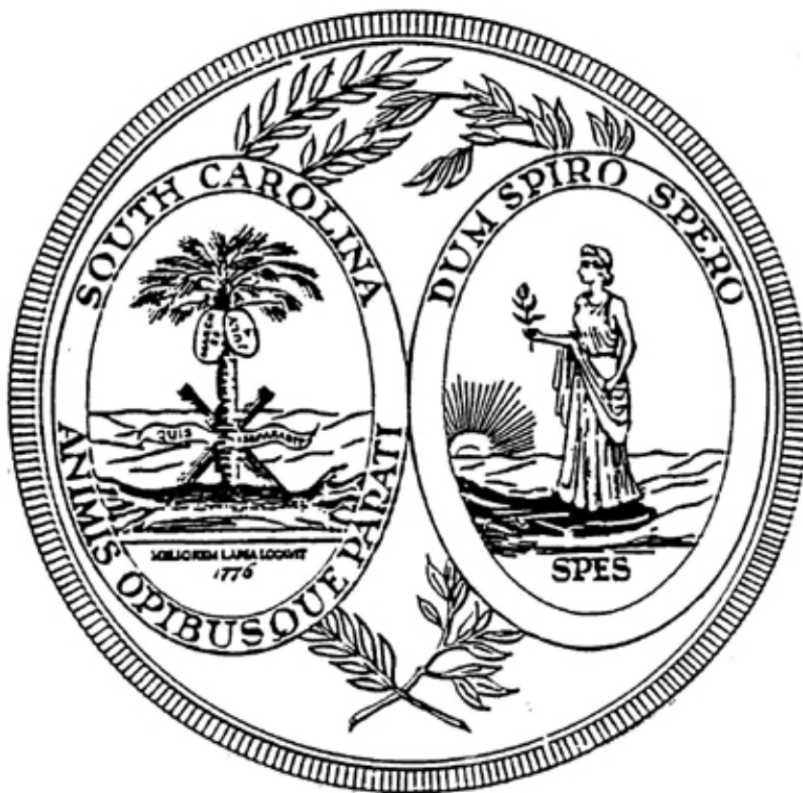


**SOUTH CAROLINA
HIGHER EDUCATION
TUITION GRANTS COMMISSION**



**ANNUAL REPORT
2016-2017**

**SOUTH CAROLINA HIGHER EDUCATION
TUITION GRANTS COMMISSION**

TO: His Excellency, Governor Henry Dargan McMaster, and the
Members of the South Carolina General Assembly

The South Carolina Higher Education Tuition Grants Commission respectfully submits for consideration its annual report. Included in this report are general data and statistics concerning the program and specific data covering the 2016-2017 award year.

Respectfully Yours,

Ms. Elizabeth Dinndorf
2016-2017 Chair
South Carolina Higher Education
Tuition Grants Commission

TABLE OF CONTENTS

	<u>Page</u>
South Carolina Tuition Grants - Philosophy and Purpose.....	3
Commission Members and Staff.....	4
Statutory Authority for the Commission.....	5
History of the Commission.....	5
Program Administered by the Commission.....	5
Public Service Activities.....	6
Program Funding	7
2016-2017 Statistical Summary.....	7

APPENDICES:

Appendix A:	Tuition Grants Awards for 2016-2017	9
Appendix B:	Tuition Grants Recipients by County	10
Appendix C:	Tuition Grants Recipients by Ethnic Group	11
Appendix D:	History – Awards, State Funds and Total Funds	12
Appendix E:	History – Average Grants and Average Tuition & Fees	13
Appendix F:	Total Undergraduate Full-time Students	14
Appendix G:	South Carolina Full-time Students	15
Appendix H:	College Fall Headcount Enrollments (Public & Private)	16
Appendix I:	Analysis of Program Administrative Costs	17
Appendix J:	SC Tuition Grants Commission: Organizational Chart	18

SC HIGHER EDUCATION TUITION GRANTS PHILOSOPHY AND PURPOSE

“Whereas, the General Assembly finds that as a result of the rising school population and the continuously rising cost of providing proper facilities for the higher education of young people, there exists in this State an urgent need to use all available educational resources wisely. A lack of higher education facilities is inimical to the welfare and prosperity of all residents of the State and to the continued financial growth of the State;

Whereas, the General Assembly also finds that within the State there exists several accredited independent institutions of higher learning whose facilities could be used effectively in the public interest by providing additional space for students thereby eliminating the need for substantial increases in capital outlay funds; and

Whereas, it is vital to the growth of the State that all qualified residents be offered the opportunity for furthering their education.

To achieve this in the most economical manner, students willing to bear the major cost of their education expenses should be assisted where financial need exists in an effort to make their educational goals more readily attainable.”

-- The Preamble to the Tuition Grants Law

**SOUTH CAROLINA HIGHER EDUCATION
TUITION GRANTS COMMISSION
2016-2017**

COMMISSION MEMBERS

Ms. Elizabeth Dinndorf
Chair
Columbia College
Columbia, SC

Dr. Maurice Scherrens
Vice Chair
Newberry College
Newberry, SC

Dr. Todd Voss
Secretary
Southern Wesleyan University
Central, SC

Dr. Ernest McNealey
Allen University
Columbia, SC

Dr. Robert Wyatt
Coker College
Hartsville, SC

Dr. Elizabeth Davis
Furman University
Greenville, SC

Dr. Randall Pannell
North Greenville University
Tigerville, SC

Mr. Bob Staton
Presbyterian College
Clinton, SC

Mr. Jeff Schilz, Ex-officio
Commission on Higher Education
Columbia, SC

STAFF MEMBERS

Mr. Earl L. Mayo, Jr. Director

Mrs. Katherine H. Harrison Deputy Director

Mr. Zachary R. Christian Financial Aid Counselor

Ms. Gena F. Miles Financial Officer

STATUTORY AUTHORITY FOR THE COMMISSION

The General Assembly of the State of South Carolina, during the 1970 session, passed Act 1191 creating the Higher Education Tuition Grants Commission. This Commission was created as a State agency charged with the responsibility for overseeing the operation of the Tuition Grants Program.

HISTORY OF THE COMMISSION

In 1970, the General Assembly passed a bill that created the Higher Education Tuition Grants Commission, an agency that was charged with the responsibility of administering tuition grants to independent college students. The Governor signed the bill on May 1, 1970. The original appropriation was \$5,000. No awards were made the first year. In 1971-72, the program aided 43 students. In 1972-73, a total of 134 students received awards.

The Tuition Grants Program has assisted many needy students since its inception in 1970. Since the beginning of the program, over 423,000 awards have been made.

PROGRAM ADMINISTERED BY THE COMMISSION

The South Carolina Higher Education Tuition Grants Commission has been charged by the General Assembly with the responsibility of administering the Tuition Grants Program. This program allows South Carolina residents who attend participating independent colleges in this state to receive financial assistance from the state if they meet the eligibility requirements of the program.

All grant recipients must be full-time students, of good moral character, must demonstrate financial need, and must meet specified standards of academic merit.

Eligible students may apply their grants only toward tuition and fees at a South Carolina independent college that is non-profit and accredited by the Southern Association of Colleges and Secondary Schools or an independent bachelor's level institution chartered before 1962 whose major campus and headquarters are located within South Carolina. The amount of the grant may not exceed the student's financial need or the total of tuition and fees charged by the college. Also, the amount may not exceed the average annual state subsidy for the students who attend the four-year public colleges in the state.

Between August and October of each year, the Tuition Grants Commission distributes information brochures to all South Carolina secondary schools and to eligible colleges. The guidance offices at the secondary schools and the financial aid offices at the colleges distribute these materials to students throughout the state.

2016-2017 ACADEMIC YEAR

The Commission received 33,371 complete applications for grants for the 2016-2017 award year. The Tuition Grants Program has opened the door of educational opportunity to thousands of South Carolinians. A survey of grant recipients has indicated that, if they had not received tuition grant assistance, many of them would not have gone to college or would have enrolled in one of South Carolina's public colleges at a greater cost to the State.

PUBLIC SERVICE ACTIVITIES

During the 2016-2017 year, Commission staff members participated in nine professional programs for parents and students. These financial aid information sessions were conducted throughout the State and were attended by over 750 participants. Additionally, throughout the year, the staff participated in four statewide conferences held for high school guidance counselors. A total of 409 high school guidance counselors and college admissions officers attended these meetings.

In November, the Commission staff conducted its annual training session for financial aid administrators with over 40 independent college financial aid professionals in attendance. The staff also conducted on-site training workshops for colleges as needed including Program Orientation sessions for new college presidents. Executive staff presented Program information at various meetings of the South Carolina Independent Colleges and Universities, including Independent Colleges and Universities Day at the South Carolina State House, and at the annual statewide conference of the South Carolina Association of Student Financial Aid Administrators.

On January 25, 2017, the Deputy Director participated in a statewide South Carolina Educational Television (SCETV) broadcast. The January broadcast was the annual SCETV program titled *Making College Affordable*. This one-hour SCETV broadcast was a live interactive telecast focusing on financial aid for postsecondary education.

The Commission's web site (www.sctuitiongrants.org) provides students, parents, and the general public important program information, links to South Carolina's independent colleges, links to federal financial aid information, and links to necessary program documents for students and parents. Additionally, the Commission's web site provides a separate, secure section for college financial aid offices for expediting the processing of program reports. Colleges download information securely via the Internet instead of depending upon hard-copy reports or other manual processes. This provides the Commission the ability to quickly disburse grant dollars to students.

PROGRAM FUNDING

The State Appropriation for Tuition Grants in 2016-2017.....	\$25,958,624
State Lottery Funds.....	\$8,330,008
Childrens' Education Endowment Funds.....	\$4,852,296
Total Grants Program Funding.....	\$39,140,928
**Total Administrative Costs for 2016-2017.....	\$365,107

** **Total administrative costs were less than 1.00% of the total agency appropriation.**

2016-2017 STATISTICAL SUMMARY

1. Students at twenty-one (**21**) independent colleges in South Carolina were eligible to participate in the Tuition Grants Program during 2016-2017. These colleges enrolled a total of **29,441** full-time undergraduate students. Nearly sixty-five (**64.9**) percent (**19,106**) were South Carolina residents.
2. Over 20 percent (**20.4%**) of the 2016-2017 total award dollars went to South Carolina residents attending the five historically black colleges that participate in the program.
3. In 2016-2017, over forty-three percent (**43.1%**) of South Carolina Tuition Grants recipients were minority students. African-American students represented over thirty-six percent (**36.5%**) of recipients.
4. Over eighty-five percent (**85.2%**) of SCTG recipients were dependent upon their parents/guardians for financial support. Less than fifteen percent (**14.8%**) were totally independent and relied only on their own income or that of a spouse.
5. Almost sixty percent (**59.5%**) of the 2016-2017 SCTG recipients had family incomes of **\$60,000 or less**. The average family income for all 2015-2016 Tuition Grant recipients was \$59,088.
6. The average age for all 2016-2017 Tuition Grant recipients was **22.2 years**.
7. The 2016-2017 average private college tuition and fee charge was **\$23,901** per year, not including room, board, or books. The average South Carolina Tuition Grant award for 2016-2017 was **\$2,897** and covered **12.1%** of the average tuition and fees charge.

APPENDICES

	<u>Page</u>
Appendix A: Tuition Grants Awards for 2016-2017	9
Appendix B: Tuition Grants Recipients by County	10
Appendix C: Tuition Grants Recipients by Ethnic Group	11
Appendix D: History – Awards, State Funds and Total Funds	12
Appendix E: History – Average Grants & Average Tuition & Fees	13
Appendix F: Total Undergraduate Full-time Students	14
Appendix G: South Carolina Full-time Students	15
Appendix H: Fall Headcount Enrollments (Public & Private)	16
Appendix I: Analysis of Program Administrative Costs	17
Appendix J: Tuition Grants Commission: Organizational Chart	18

APPENDIX A

SOUTH CAROLINA TUITION GRANTS COMMISSION

2016-2017 TUITION GRANTS

<u>College</u>	<u>Freshmen</u>		<u>Sophomores</u>		<u>Juniors</u>		<u>Seniors</u>		<u>Total</u>		<u>Average</u>
	<u>Number</u>	<u>Amount</u>	<u>Number</u>	<u>Amount</u>	<u>Number</u>	<u>Amount</u>	<u>Number</u>	<u>Amount</u>	<u>Number</u>	<u>Amount</u>	
Allen University	57	\$155,600	62	\$178,000	36	\$110,400	48	\$140,800	203	\$584,800	\$2,881
Anderson University	382	\$1,168,850	330	\$1,005,350	344	\$993,340	279	\$736,970	1,335	\$3,904,510	\$2,925
Benedict College	225	\$625,626	218	\$644,663	134	\$415,360	134	\$360,901	711	\$2,046,550	\$2,878
Bob Jones University	134	\$404,812	128	\$398,622	110	\$343,234	111	\$320,340	483	\$1,467,008	\$3,037
Charleston Southern	415	\$1,242,880	477	\$1,413,979	338	\$1,034,300	281	\$813,150	1,511	\$4,504,309	\$2,981
Claflin University	375	\$1,156,094	321	\$993,620	246	\$753,800	209	\$614,560	1,151	\$3,518,074	\$3,057
Coker College	154	\$456,710	150	\$386,891	136	\$354,134	131	\$321,006	571	\$1,518,741	\$2,660
Columbia College	110	\$326,625	123	\$367,900	106	\$311,440	104	\$282,640	443	\$1,288,605	\$2,909
Columbia International	27	\$80,068	52	\$158,570	44	\$130,790	38	\$105,600	161	\$475,028	\$2,950
Converse College	139	\$417,140	119	\$353,785	119	\$340,970	91	\$260,355	468	\$1,372,250	\$2,932
Erskine College	122	\$366,400	100	\$305,600	69	\$219,170	67	\$207,270	358	\$1,098,440	\$3,068
Furman University	130	\$374,270	116	\$348,370	105	\$305,930	90	\$257,060	441	\$1,285,630	\$2,915
Limestone College	212	\$592,063	253	\$523,669	270	\$504,085	212	\$351,201	947	\$1,971,018	\$2,081
Morris College	114	\$338,289	124	\$364,396	69	\$204,158	67	\$184,889	374	\$1,091,732	\$2,919
Newberry College	182	\$548,760	166	\$516,160	149	\$454,810	109	\$313,540	606	\$1,833,270	\$3,025
North Greenville	304	\$911,930	317	\$939,615	303	\$893,142	271	\$759,080	1,195	\$3,503,767	\$2,932
Presbyterian College	170	\$518,621	116	\$371,200	98	\$307,200	91	\$280,000	475	\$1,477,021	\$3,110
Southern Wesleyan	115	\$349,400	115	\$353,220	100	\$303,856	101	\$284,654	431	\$1,291,130	\$2,996
Spartanburg Methodist	320	\$944,675	218	\$637,036	6	\$11,200	4	\$11,536	548	\$1,604,447	\$2,928
Voorhees College	50	\$147,200	40	\$123,200	48	\$147,200	52	\$148,500	190	\$566,100	\$2,979
Wofford College	160	\$499,438	164	\$504,976	170	\$514,065	118	\$364,160	612	\$1,882,639	\$3,076
TOTAL	3,897	\$11,625,451	3,709	\$10,888,822	3,000	\$8,652,584	2,608	\$7,118,212	13,214	\$38,285,069	\$2,897

APPENDIX B

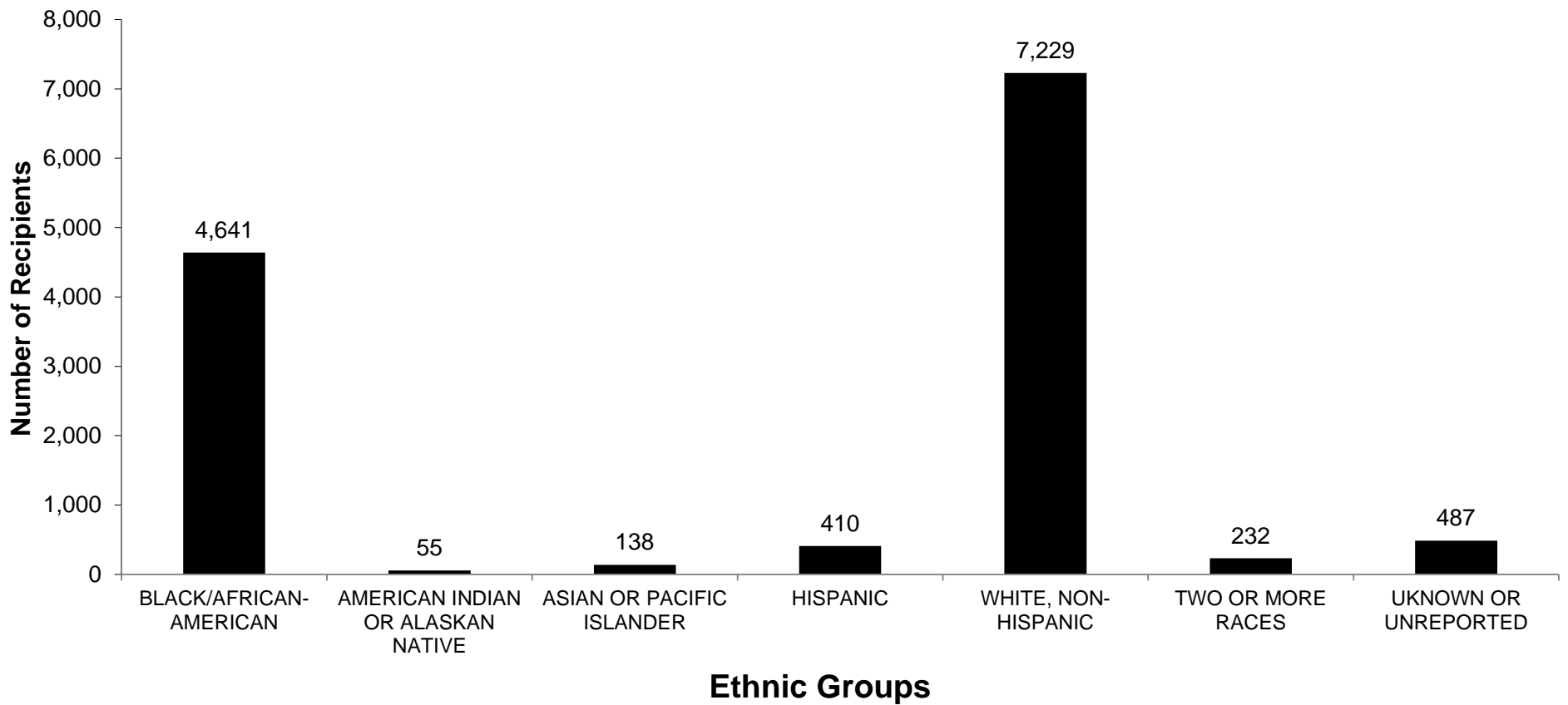
SC TUITION GRANTS RECIPIENTS BY COUNTY

2016-2017

<u>COUNTY</u>	<u>RECIPIENTS</u>	<u>COUNTY</u>	<u>RECIPIENTS</u>
Abbeville	60	Greenwood	173
Aiken	242	Hampton	57
Allendale	26	Horry	242
Anderson	631	Jasper	59
Bamberg	73	Kershaw	192
Barnwell	71	Lancaster	92
Beaufort	179	Laurens	174
Berkeley	548	Lee	50
Calhoun	39	Lexington	815
Charleston	592	Marion	105
Cherokee	244	Marlboro	72
Chester	65	McCormick	10
Chesterfield	134	Newberry	155
Clarendon	104	Oconee	213
Colleton	64	Orangeburg	374
Darlington	251	Pickens	528
Dillon	59	Richland	1047
Dorchester	552	Saluda	34
Edgefield	34	Spartanburg	1316
Fairfield	69	Sumter	299
Florence	379	Union	114
Georgetown	162	Williamsburg	158
Greenville	1,873	York	484

APPENDIX C

SOUTH CAROLINA TUITION GRANTS RECIPIENTS BY ETHNIC GROUP 2016-2017



APPENDIX D

TUITION GRANTS: AWARDS, STATE FUND AND TOTAL FUNDS HISTORY

(EXCLUDES PROGRAM ADMINISTRATIVE APPROPRIATIONS)

<u>Year</u>	<u>State Appropriation</u>	<u>Total Funds</u>	<u>Number Of Grants</u>
1971-72	\$50,000	\$50,000	43
1972-73	\$150,000	\$150,000	134
1973-74	\$4,000,000	\$4,000,000	3,271
1974-75	\$6,180,000	\$6,398,882	5,186
1975-76	\$7,255,473	\$7,460,840	5,784
1976-77	\$7,332,686	\$7,833,229	7,516
1977-78	\$8,354,749	\$9,085,707	7,758
1978-79	\$9,356,497	\$10,133,140	9,335
1979-80	\$9,907,590	\$10,788,633	7,634
1980-81	\$10,834,659	\$11,700,785	8,479
1981-82	\$12,084,659	\$12,646,350	8,368
1982-83	\$12,184,659	\$12,375,722	7,974
1983-84	\$11,929,149	\$12,577,824	6,974
1984-85	\$12,929,149	\$13,749,800	7,412
1985-86	\$14,629,149	\$15,450,804	7,635
1986-87	\$15,592,839	\$16,379,163	7,795
1987-88	\$15,541,444	\$16,372,303	7,608
1988-89	\$16,189,154	\$17,825,811	7,934
1989-90	\$17,414,241	\$18,191,460	7,242
1990-91	\$17,414,241	\$18,054,069	6,816
1991-92	\$16,790,153	\$16,823,103	6,694
1992-93	\$16,004,273	\$16,583,714	6,606
1993-94	\$15,251,517	\$16,892,826	8,371
1994-95	\$16,346,136	\$17,358,968	8,428
1995-96	\$17,564,872	\$19,034,623	8,950
1996-97	\$20,783,666	\$21,727,055	9,321
1997-98	\$22,074,929	\$22,626,641	9,412
1998-99	\$22,307,633	\$22,582,693	9,800
1999-2000	\$23,115,329	\$23,391,633	9,908
2000-2001	\$24,479,575	\$24,937,077	10,152
2001-2002	\$22,376,550	\$22,971,182	10,852
2002-2003	\$25,650,042	\$26,487,728	11,586
2003-2004	\$25,202,599	\$25,922,255	12,004
2004-2005	\$27,391,853	\$28,277,793	12,025
2005-2006	\$27,572,932	\$28,438,045	11,869
2006-2007	\$31,457,949	\$32,160,551	11,735
2007-2008	\$38,940,173	\$39,643,698	12,461
2008-2009	\$34,703,852	\$35,395,111	12,801
2009-2010	\$34,526,506	\$35,230,732	14,200
2010-2011	\$33,979,657	\$34,813,702	14,451
2011-2012	\$33,437,157	\$33,437,157	14,192
2012-2013	\$35,548,692	\$35,548,692	13,881
2013-2014	\$35,387,442	\$35,387,442	13,498
2014-2015	\$36,086,136	\$36,086,136	13,346
2015-2016	\$36,462,158	\$36,462,158	13,340
2016-2017	\$39,140,928	\$39,140,928	13,214
Totals	\$921,913,047	\$948,586,165	423,995

APPENDIX E

TUITION GRANTS HISTORY: AVERAGE GRANTS & AVERAGE TUITION/FEEES

<u>Year</u>	<u>Private Colleges Aver. Tuition/Fee Charges</u>	<u>Average SC Tuition Grant</u>	<u>Percent Tuition Covered By SCTG</u>	<u>Tuition Gap (Amount Not Covered)</u>
1974-1975	\$1,555	\$1,233	79%	\$322
1975-1976	\$1,714	\$1,287	75%	\$427
1976-1977	\$1,901	\$1,102	58%	\$799
1977-1978	\$2,087	\$1,148	55%	\$939
1978-1979	\$2,285	\$1,314	58%	\$971
1979-1980	\$2,486	\$1,433	58%	\$1,053
1980-1981	\$2,765	\$1,280	46%	\$1,485
1981-1982	\$3,089	\$1,577	51%	\$1,512
1982-1983	\$3,403	\$1,665	49%	\$1,738
1983-1984	\$3,691	\$1,803	49%	\$1,888
1984-1985	\$4,099	\$1,852	45%	\$2,247
1985-1986	\$4,464	\$1,984	44%	\$2,480
1986-1987	\$4,706	\$2,097	45%	\$2,609
1987-1988	\$5,161	\$2,149	42%	\$3,012
1988-1989	\$5,607	\$2,240	40%	\$3,367
1989-1990	\$6,160	\$2,506	41%	\$3,654
1990-1991	\$6,583	\$2,626	40%	\$3,957
1991-1992	\$7,058	\$2,510	36%	\$4,548
1992-1993	\$7,406	\$2,529	34%	\$4,877
1993-1994	\$7,972	\$2,005	25%	\$5,967
1994-1995	\$8,440	\$1,982	24%	\$6,458
1995-1996	\$8,935	\$2,075	23%	\$6,860
1996-1997	\$9,467	\$2,309	24%	\$7,158
1997-1998	\$9,967	\$2,329	23%	\$7,638
1998-1999	\$10,561	\$2,329	22%	\$8,232
1999-2000	\$11,093	\$2,317	21%	\$8,776
2000-2001	\$11,682	\$2,482	21%	\$9,200
2001-2002	\$12,292	\$2,103	17%	\$10,189
2002-2003	\$13,022	\$2,255	17%	\$10,767
2003-2004	\$13,888	\$2,150	15%	\$11,738
2004-2005	\$14,698	\$2,281	15%	\$12,417
2005-2006	\$15,538	\$2,411	15%	\$13,127
2006-2007	\$16,611	\$2,648	16%	\$13,963
2007-2008	\$17,281	\$3,000	17%	\$14,281
2008-2009	\$18,244	\$3,006	16%	\$15,238
2009-2010	\$19,055	\$2,448	13%	\$16,607
2010-2011	\$19,391	\$2,356	12%	\$17,035
2011-2012	\$20,506	\$2,278	11%	\$18,228
2012-2013	\$21,032	\$2,603	12%	\$18,429
2013-2014	\$22,311	\$2,641	11%	\$19,523
2014-2015	\$22,195	\$2,672	12%	\$20,469
2015-2016	\$23,141	\$2,775	12%	\$20,366
2016-2017	\$23,901	\$2,897	12%	\$21,004

APPENDIX F

TOTAL UNDERGRADUATE FULL-TIME STUDENTS AT THE TWENTY-ONE COLLEGES PARTICIPATING IN THE SC TUITION GRANTS PROGRAM (FALL OPENING ENROLLMENT FOR THE LAST TEN YEARS)

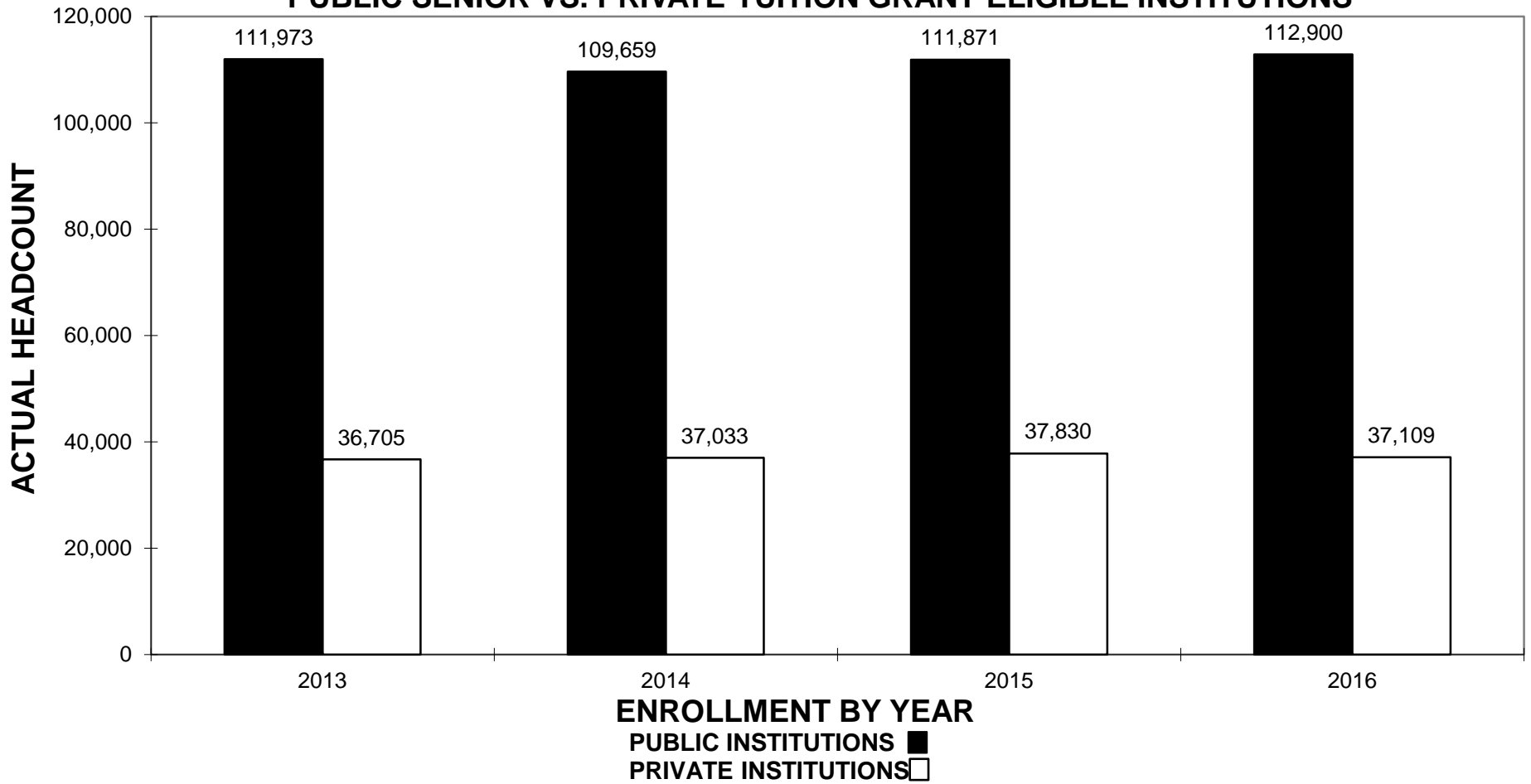
<u>COLLEGE</u>	<u>2007-08</u>	<u>2008-09</u>	<u>2009-10</u>	<u>2010-11</u>	<u>2011-12</u>	<u>2012-13</u>	<u>2013-14</u>	<u>2014-15</u>	<u>2015-16</u>	<u>2016-17</u>
Allen	640	703	804	819	639	671	635	642	601	575
Anderson	1405	1523	1689	1902	1997	2448	2156	2286	2401	2480
Benedict	2558	2831	2934	3088	3147	2921	2470	2405	2436	2249
Bob Jones	3664	3545	3195	3223	2966	2964	2830	2497	2430	2314
Charleston Southern	2395	2348	2377	2431	2615	2791	2661	2638	2796	2896
Claflin	1566	1606	1710	1754	1794	1856	1807	1751	1807	1873
Coker	1028	956	993	966	972	1150	1019	967	957	958
Columbia	984	961	964	924	875	1075	867	794	1034	1041
Columbia International	429	440	504	514	521	583	754	497	495	454
Converse	631	617	594	559	554	693	775	752	745	850
Erskine	567	566	567	541	534	525	744	582	615	603
Furman	2350	2614	2588	2613	2674	2653	2722	2696	2624	2697
Limestone	2047	1814	2193	2133	2273	3061	2390	2307	2252	2156
Morris	867	893	977	1071	1000	900	817	770	760	735
Newberry	900	954	1083	1116	1074	1038	1007	1049	1031	1052
North Greenville	1784	1837	1895	1926	1935	2215	2102	2113	2062	1926
Presbyterian	1128	1124	1198	1133	1143	1130	1395	1078	990	996
Southern Wesleyan	1714	1604	1649	1440	1412	1333	1672	1353	1249	785
Spartanburg Methodist	757	716	775	761	782	807	798	776	762	730
Voorhees	557	547	671	732	632	648	516	452	422	407
Wofford	<u>1306</u>	<u>1364</u>	<u>1415</u>	<u>1468</u>	<u>1500</u>	<u>1565</u>	<u>1598</u>	<u>1643</u>	<u>1647</u>	<u>1664</u>
TOTAL STUDENTS	29277	29563	30775	31114	31039	33027	31735	30048	30116	29441

APPENDIX G

SOUTH CAROLINA RESIDENT FULL-TIME STUDENTS AT THE TWENTY-ONE COLLEGES PARTICIPATING IN THE SC TUITION GRANTS PROGRAM (FALL OPENING ENROLLMENT FOR THE LAST TEN YEARS)

<u>COLLEGE</u>	<u>2007-08</u>	<u>2008-09</u>	<u>2009-10</u>	<u>2010-11</u>	<u>2011-12</u>	<u>2012-13</u>	<u>2013-14</u>	<u>2014-15</u>	<u>2015-16</u>	<u>2016-17</u>
Allen	494	555	615	601	508	367	455	484	435	415
Anderson	1187	1271	1413	1474	1644	1722	1679	1836	1882	1937
Benedict	1516	1545	1571	1622	1632	1426	1118	1217	1249	1209
Bob Jones	1040	1031	963	952	741	705	704	693	687	699
Charleston Southern	1925	1897	1923	1971	2125	2057	2167	2219	2341	2383
Clafin	1309	1300	1367	1371	1396	1429	1365	1351	1406	1524
Coker	896	841	861	840	825	812	779	688	666	677
Columbia	883	863	866	817	767	741	638	702	924	896
Columbia International	168	182	259	258	264	254	269	276	264	237
Converse	455	447	437	396	398	404	480	549	538	614
Erskine	413	418	421	408	384	366	392	406	422	416
Furman	707	802	826	826	803	751	732	705	682	707
Limestone	1606	1445	1763	1714	1827	1612	1808	1733	1668	1594
Morris	749	759	820	894	838	718	752	616	621	599
Newberry	703	756	877	909	857	786	752	764	751	790
North Greenville	1335	1164	951	1447	1454	1418	1527	1534	1488	1405
Presbyterian	718	719	765	723	753	731	679	631	582	589
Southern Wesleyan	1405	1292	1358	1170	1180	1099	1292	1065	1032	579
Spartanburg Methodist	705	655	725	730	771	717	746	728	716	672
Voorhees	382	402	474	498	387	432	358	322	297	265
Wofford	<u>786</u>	<u>805</u>	<u>859</u>	<u>874</u>	<u>894</u>	<u>871</u>	<u>824</u>	<u>888</u>	<u>881</u>	<u>899</u>
TOTAL STUDENTS	19382	19149	20114	20495	20448	19418	19516	19407	19532	19106

APPENDIX H
COLLEGE FALL HEADCOUNT ENROLLMENTS
PUBLIC SENIOR VS. PRIVATE TUITION GRANT ELIGIBLE INSTITUTIONS



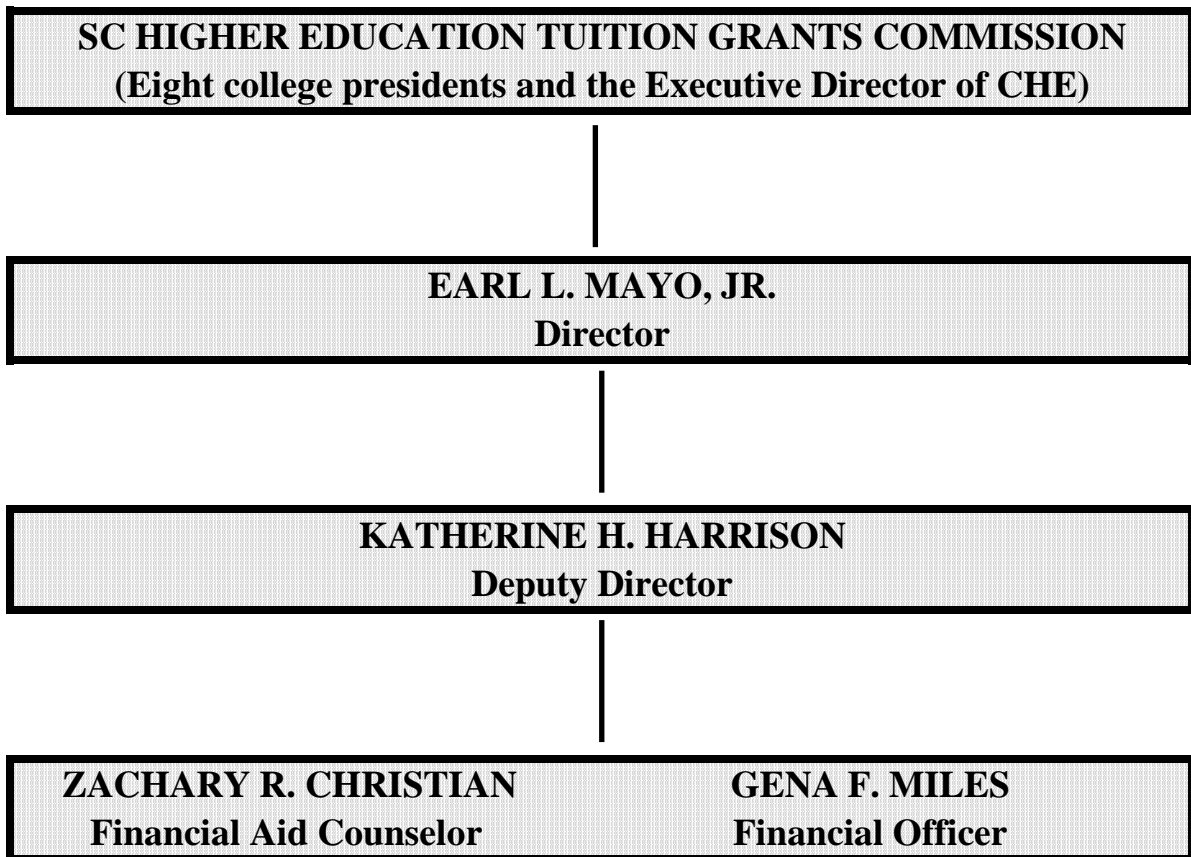
APPENDIX I
SOUTH CAROLINA TUITION GRANTS COMMISSION
Twenty Year Analysis of Administration Costs

YEAR	TOTAL DOLLARS	TOTAL ADMIN DOLLARS EXPENDED	ADMIN DOLLARS AS % OF TOTAL DOLLARS	TOTAL APPS PROCESSED	ADMIN COST PER APP.	TOTAL AWARDS	ADMIN COST PER AWARD
2016-2017	\$39,544,190	\$381,426	0.96%	33,371	\$11.43	13,214	\$28.87
2015-2016	\$36,832,922	\$365,107	0.99%	33,681	\$10.84	13,340	\$27.37
2014-2015	\$36,019,715	\$362,979	1.00%	34,301	\$9.44	13,346	\$27.20
2013-2014	\$35,650,327	\$343,342	0.95%	35,048	\$9.80	13,498	\$25.44
2012-2013	\$36,126,320	\$326,457	0.89%	35,607	\$9.17	13,881	\$23.52
2011-2012	\$34,749,257	\$301,340	0.87%	33,190	\$9.08	14,192	\$21.23
2010-2011	\$34,827,306	\$312,785	0.89%	32,629	\$9.59	14,451	\$21.64
2009-2010	\$35,235,299	\$308,669	0.87%	31,023	\$9.95	14,200	\$21.74
2008-2009	\$37,700,369	\$318,897	0.85%	28,447	\$11.21	12,801	\$24.91
2007-2008	\$38,308,382	\$359,600	0.94%	27,206	\$13.22	12,461	\$28.86
2006-2007	\$32,778,861	\$347,621	1.06%	25,747	\$13.50	11,735	\$29.62
2005-2006	\$29,072,576	\$328,791	1.14%	26,097	\$12.60	11,869	\$27.70
2004-2005	\$28,859,988	\$320,583	1.11%	25,823	\$12.41	12,025	\$26.66
2003-2004	\$26,420,914	\$334,153	1.26%	25,419	\$13.15	12,004	\$27.84
2002-2003	\$26,944,463	\$318,359	1.18%	24,872	\$12.80	11,586	\$27.48
2001-2002	\$23,336,626	\$365,444	1.57%	23,122	\$15.81	10,870	\$33.62
2000-2001	\$25,295,026	\$357,949	1.42%	20,821	\$17.19	10,152	\$35.26
1999-2000	\$23,676,565	\$321,964	1.36%	20,185	\$15.95	9,908	\$32.50
1998-1999	\$22,898,136	\$315,443	1.38%	17,896	\$17.63	9,800	\$32.19
1997-1998	\$22,939,247	\$312,606	1.36%	17,354	\$18.01	9,412	\$33.21
1996-1997	\$21,559,158	\$274,658	1.27%	16,385	\$16.76	9,321	\$29.47
1995-1996	\$18,750,903	\$289,121	1.54%	15,671	\$18.45	8,950	\$32.30

APPENDIX J

SOUTH CAROLINA HIGHER EDUCATION TUITION GRANTS COMMISSION

ORGANIZATIONAL CHART



Total Number of Documents Printed:	210
Cost Per Unit:	\$1.56
Total Printing Cost - SC Higher	
Education Tuition Grants Commission:	\$327.64